

Advantage of Real Manufacturer



Stable Quality



Competitive Price



Customized OEM



Swift A/S



All The Power You Need!



✓ **Accumulator** absorbs shocks and fluctuations, improving life-time of hydraulic breakers.
Applicable breakers : from 810M to 1500M.

✓ **Valve adjuster** controls the speed and power output of hydraulic breaker.
Applicable breakers : from 600M to 1500M.

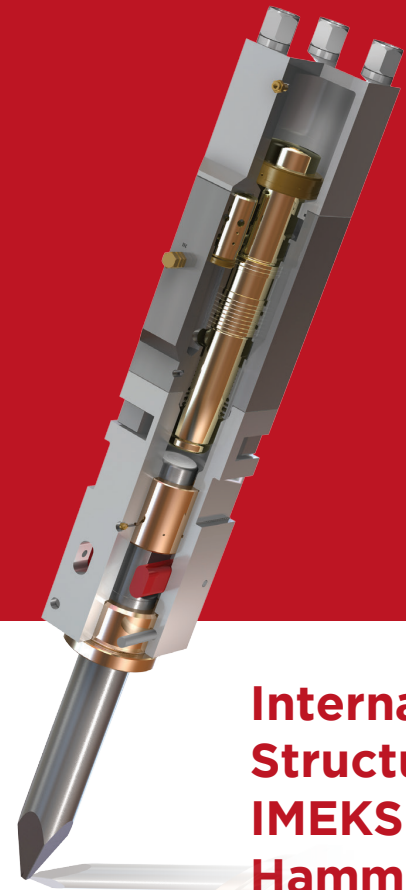
✓ **ABF(Anti Blank Firing)** system protects main body from idle hammering.
Applicable breakers : from 810M to 1500M

✓ **Auto greasing system** improves productivity and comfort for operators.
Applicable breakers : from 500M to 1500M.

✓ **Long tool pin** and **round nut** increase the life time of front head.
Applicable breakers : all models

✓ **On control valve** provides sufficient oil flow into the cylinder.

✓ **Air check valve** enables underwater hammering.
Applicable breakers : all models



Internal Structure of IMEKS Hammers

IMEKS
Hydraulic Hammers & Attachments Supplier

info@imeks.com.tr
+90 312 385 24 88
+90 312 385 10 45
www.imeks.com.tr

@imeksmakina

IMEKS



Technical Specification

Description / IMEKS Model		100M	200M	300M	350M	400M	430M	450M	500M	600M	750M	810M	1050M	1200M	1400M	1500M
Suitable Excavator	ton	0.8-2.5	1.2-3.0	2.5-4.5	3-6	4-8	5-10	6-14	10-18	14-22	17-25	22-32	25-35	28-36	35-45	45-55
Operating Weight (Box)	kg	100	125	150	225	330	450	540	950	1400	1650	1950	2350	2750	3200	4000
Operating Weight (Skid)	kg	450	508	624	730	878	996									
Required Oil Flow	l/min	15-30	20-40	25-50	30-60	40-70	50-90	60-100	80-110	90-120	100-150	120-180	150-210	180-240	200-260	210-290
Setting Pressure	bar	150	150	150	150	170	180	190	200	210	210	210	210	210	210	210
Operating Pressure	bar	90-120	90-120	90-120	100-130	110-140	120-150	130-160	150-170	150-170	160-180	160-180	160-180	160-180	160-180	160-180
Impact Energy	joule	203	271	406	542	677	1017	1355	2033	2711	3423	4067	5423	6779	10846	12202
Impact Rate	bpm	800-1400	700-1200	600-1100	500-1000	500-900	400-800	400-800	350-700	350-650	350-600	350-500	300-450	300-450	250-350	200-350
Hose Diameter	inch	½	½	½	½	½	½	¾	¾	1	1	1	1	1¼	1¼	1¼
Hose Diameter (Skid)	inch	¾	¾	¾	¾	¾	¾									
Noise Level	dB	106	107	109	117	109	115	112	114	115	120	118	120	123	124	125
Tool Diameter	mm	40	45	53	60	68	75	85	100	125	135	140	150	155	165	175

* The above specifications are subject to change without prior notice for the quality enhancement.